




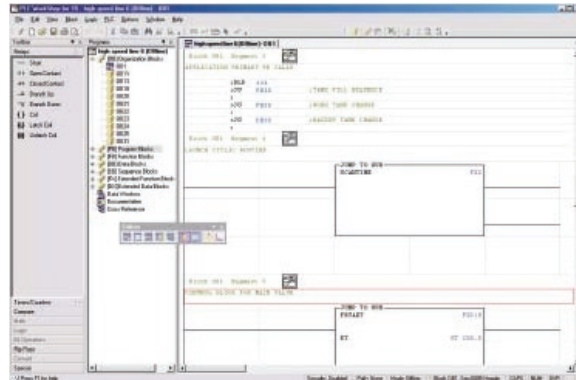


<p>CPU</p>		<p>S5 90U/95U 100U 115U 135U/150U</p> <p>Stort udvalg</p>
<p>I/O</p>		<p>S5 90U/95U 100U 115U 135U/150U</p> <p>Stort udvalg</p>
<p>Power Supply</p>		<p>S5 90U/95U 100U 115U 135U/150U</p> <p>Stort udvalg</p>
<p>Batterier</p>		<p>Batterier fra lager</p>
<p>Ombytning- og reparationservice</p>		<p>Reparationer foretages på ca. 5 uger eller ombyttes omgående.</p> <p>Det er også muligt for at købe brugte/nye enheder</p>

Developed using the latest .NET technology, *PLC Workshop™ for Siemens S5™ – Performance Series* is a full 32-bit Windows® PLC programming software application that offers programming in both Ladder Logic and Statement List. *PLC Workshop for Siemens S5 – Performance Series* is easy to use, has built-in SCADA capabilities, offers the ability to track program changes (Activity Audit Trail), and offers powerful security utilizing NT authentication. *PLC Workshop for Siemens S5 – Performance Series* supports S5 PLCs from 90U through 155U and Windows® operating systems from 98 through XP.

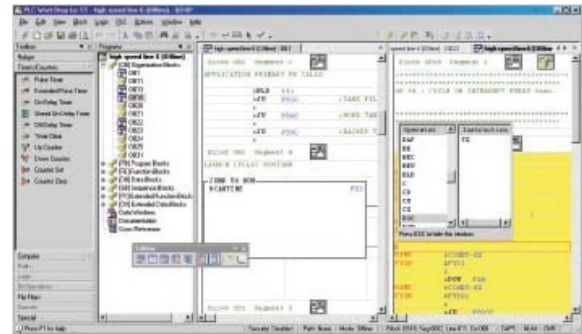
PLC Workshop for Siemens S5 – Performance Series offers features that will save you time and money, such as:

- Flexible program setup
- Open Tree View programming
- Floating and Docking Toolbars
- Color Editor
- Shortcut Addressing
- Cut, Copy, and Paste commands by block or element
- Block call with Zoom In/Out and Previous or Next features
- Mnemonics
- Multiple windows views and editing
- Multiple documentation options
- Context-Sensitive Help

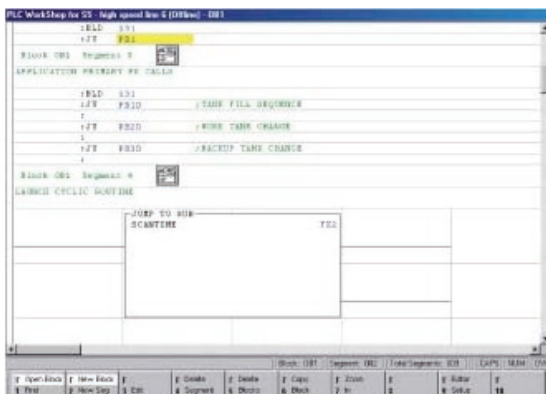


With *PLC Workshop for Siemens S5 – Performance Series* you can:

- Open several online and/or offline programs simultaneously
- Transfer offline logic to the PLC in one easy step
- Import Step5 files in seconds
- Merge specific blocks
- Utilize Softkey mode, a classic style interface (function keys) for users familiar with *PLC Workshop for DOS* software products
- Troubleshoot with Network Cross-Reference, Program Compare, and Data Window
- Choose from numerous print options, including Print Preview and Print-to-Text File
- Save Ladder/Statement List and documentation in a single file reducing disk space and facilitating file management



PLC Workshop for Siemens S5 – Performance Series offers complete support for H1 (Industrial Ethernet) as well as Serial Communications.



When you order *PLC Workshop for Siemens S5 – Performance Series* you will receive:

- *PLC Workshop for Siemens S5 – Performance Series* Software CD
- *PLC Workshop for Siemens S5 – Performance Series* Manual
- Unlimited product upgrades and customer support during the first year (see Specifications for details)
- FasTrak Key to attach to your computer's parallel or USB port if applicable (Keyless site licenses are also available)

SPECIFICATIONS

Product Upgrades

Regular product upgrades may be obtained by convenient download from www.fast-soft.com. Notifications via email are sent for all major feature releases.

Customer Service

When you contact us for support, you will receive immediate and accurate solutions to your questions resulting in less downtime. You will have access to the engineers who designed our software packages.

Site Licenses

Keyless site licenses are available, which eliminate tracking and losing keys.

Annual Maintenance Agreements

Following expiration of the one-year warranty period, maintenance agreements, which include unlimited technical support and product upgrades, are available for purchase on an annual basis.

PLC Support

Supports S5 PLCs from 90U through 155U including:

90U; 95U; 100U 100, 102, 103; **115U** 941, 942, 943, 944, 945; **135U** 928A, 928B; **150U** 926; **155U** 946/7

Windows Compatibility

Designed and tested under Windows 98, NT, 2000, and XP.

Speed

Full 32-bit Windows implementation allows for fast uploading and downloading of logic, data updating, cross referencing, printing, and other functions.

Ease of Use

Allows advantage of powerful Windows functions such as Cut, Copy, and Paste.

Communications Support

Supports H1 Communications for IEEE 802.3 Industrial Ethernet as well as Serial Communications (COM1 – COM4).

SCADA

Contains built-in SCADA capabilities for up to 5 data points including data logging and trending with high speed, reliable OPC communications. *PLC Workshop for Siemens S5 – Performance Series* is fully compatible with the full version of FasTrak SoftWorks *ControlShop™*.

NT Security

Incorporates one-time, server-based security configuration, complete administrator control of all editing, save and load functions, documentation, program set-up, and auditing of all user operations.

Activity Audit Trail

Provides you with the ability to track the program changes you make.

Step5 Conversion

To ease your transition from Step5, Step5 files can be loaded and used.

PLC WorkShop for Siemens S5 — Performance Series Outperforms the Competition		PLC WorkShop for Siemens S5 – Performance Series	Step5
Site Licenses	Keyless site licenses are available. No fear of tracking or losing hard keys; no soft key authorizations.	■	■
Product Updates	Regular product updates are available.	■	
	Improved continually, averaging two new feature releases per year.	■	
	You will be notified via email when new feature releases are available.	■	
	You may request features for future releases.	■	
Customer Service	When contacting technical support, you will receive immediate and accurate solutions to your questions resulting in less downtime.	■	■
	You will have access to the engineers who designed the software packages.	■	
Annual Maintenance Agreements	Following expiration of the one year warranty period, maintenance agreements are available on an annual basis. Maintenance agreements include unlimited technical support and enhanced feature releases.	■	■
PLC Support	Supports S5 PLCs from 90U through 155U.	■	■
Windows Compatibility	Designed and tested under Windows 98, NT, 2000, and XP.	■	
Speed	Full 32-bit Windows allows for fast uploading and downloading of logic, data updating, cross-referencing, printing, and other functions.	■	
Ease of Use	Allows advantage of powerful Windows functions such as use of a mouse, Cut, Copy, and Paste.	■	
Communications Support	Supports H1 Communications for IEEE 802.3 Industrial Ethernet as well as Serial.	■	■
SCADA	Built-in SCADA capabilities include data logging and trending with high speed, reliable OPC communications (5 data points).	■	
	Fully compatible with FasTrak SoftWorks <i>ControlShop</i> .	■	
NT Security	Incorporates one-time, server-based security configuration, complete administrator control of all editing, save and load functions, documentation, program set-up, and auditing of all user operations.	■	
Activity Audit Trail	Provides the ability to track program changes.	■	

PLC WorkShop and ControlShop are trademarks of FasTrak SoftWorks, Inc. S5 and Step5 are trademarks of Siemens. Windows is a registered trademark of Microsoft Corporation. Other product names mentioned herein are used for identification purposes only and may be trademarks of their respective companies.